



TELESKID | 2TS-7T | 3TS-8W | 3TS-8T

Operating weight: 9,914 - 12,615 lb (4,497 - 5,722 kg) Gross Rated Power: 74 hp (55kW)



UNRIVALLED VERSATILITY

Discover the JCB Teleskid, the world's first and only skid steer loader and compact track loader with a telescoping boom. With a high reach capability of over four metres and forward reach of over two metres, now you can lift higher, reach further and dig deeper than any skid steer on the market.

NOW YOU CAN

Access work sites and perform tasks that are simply not possible with a conventional skid steer machine.

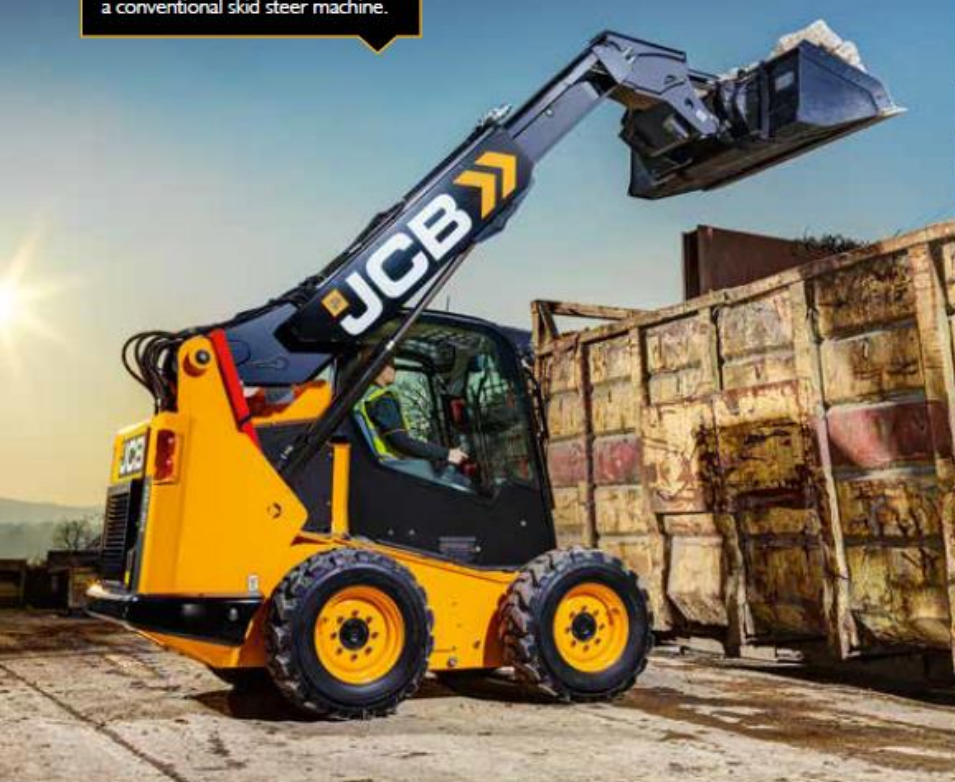


UNRIVALLED PRODUCTIVITY

The JCB Teleskid can do the work of four machines in one - a forklift, telehandler, compact wheel loader and skid steer loader, providing unbeatable productivity.

UNRIVALLED STRENGTH

With a high strength, telescopic steel boom, reliable components and extreme weather testing, the Teleskid has been designed and constructed to provide maximum performance.



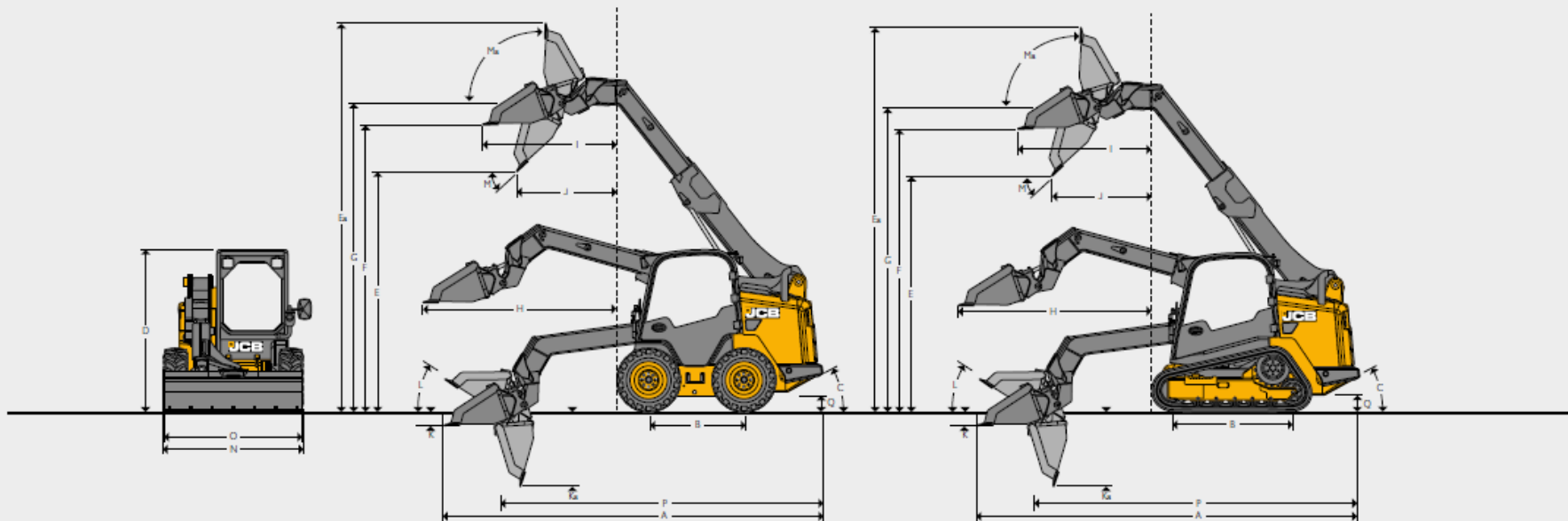
UNRIVALLED COMFORT AND CONTROL

With the largest cab on the market and electric over hydraulic controls, the JCB Teleskid offers unbeatable operator comfort and control.

UNRIVALLED SAFETY

The side door access allows for safe entry and exit without having to climb over potentially dangerous attachments, as on competitor machines with front entry.

STATIC DIMENSIONS



| Machine model | 2TS - 7T | | 3TS - 8W | | 3TS - 8T | | |
|--|-----------------------------------|-------------|-------------|---------------|--------------|---------------|--------------|
| | Retracted | Extended | Retracted | Extended | Retracted | Extended Boom | |
| A Overall length | ft-in (m) | 11-10 (3.6) | 14-1 (4.25) | 12-5 (3.8) | 16-1 (4.9) | 12-5 (3.8) | 16-1 (4.9) |
| B Wheelbase | ft-in (m) | 6-3 (1.9) | | 4-11 (1.25) | | 6-11 (2.1) | |
| C Angle of departure | degrees | 28 | | 29 | | 29 | |
| D Overall height | ft-in (m) | 6-7 (2.0) | | 6-11 (2.1) | | 6-11 (2.1) | |
| E Dump height | ft-in (m) | 7-6 (2.3) | | 7-7 (2.3) | | 7-10 (2.4) | |
| Ea Crowd height | ft-in (m) | 13-9 (4.2) | 15-5 (4.7) | 13-9 (4.1) | 16-9 (5.1) | 13-5 (4.1) | 18-4 (5.0) |
| F Loadover height | ft-in (m) | 9-4 (2.8) | 10-10 (3.3) | 9-7 (2.94) | 12-3 (3.7) | 9-6 (2.9) | 12-5 (3.8) |
| G Height to hinge pin fully raised | ft-in (m) | 10-2 (3.1) | 12-0 (3.6) | 10-6 (3.2) | 13-3 (4.05) | 10-6 (3.2) | 13-3 (4.03) |
| H Reach | ft-in (m) | 3-7 (1.1) | 6-11 (2.1) | 3-6 (1.1) | 7-4 (2.25) | 3-6 (1.1) | 7-4 (2.25) |
| I Max. reach @ full height | ft-in (m) | 3.2 (0.97) | 4-11 (1.5) | 3-6 (1.07) | 5-7 (1.7) | 3-3.3 (1) | 5-7 (1.7) |
| J Reach @ full height - fully dumped | ft-in (m) | 2-0 (0.62) | 3-8 (1.1) | 2-1 (.6) | 4-3 (1.4) | 2-3 (0.7) | 4-3 (1.3) |
| K Dig depth - toe plate horizontal clearance | in (mm) | 2 (51) | 11.7 (299) | 0.81 (22) | 8 (201) | 0.35 (9) | 11.7 (294) |
| Ka Dig depth - toe plate vertical clearance | in (mm) | 33.5 (835) | 43.3 (853) | 32.4 (825) | 39.7 (1,010) | 32.4 (825) | 43.3 (1,101) |
| L Rollback @ ground | degrees | 31 | | 30 | | 30 | |
| M Dump angle | degrees | 36 | | 42 | | 42 | |
| Ma Max. rollback angle | degrees | 98 | | 94 | | 94 | |
| N Bucket width - standard | ft-in (m) | 5-11 (1.8) | | 6-1 (1.85) | | 6-1 (1.85) | |
| O Width over tires - standard | ft-in (m) | 5-6 (1.6) | | 6-0 (1.8) | | 6-5 (2.0) | |
| P Length without attachment | ft-in (m) | 9-2 (2.8) | | 9-11 (3.02) | | 9-11 (3.02) | |
| Q Ground clearance | in (mm) | 9.0 (230) | | 9.4 (238) | | 9.4 (238) | |
| Rated operating capacity 35% | lb (kg) | 2,096 (951) | 1,140 (517) | | | 3,695 (1,676) | 1,600 (725) |
| Rated operating capacity 50% | lb (kg) | | | 3,208 (1,455) | 1,347 (611) | | |
| Bucket capacity - standard | yd ³ (m ³) | 1-10 (0.56) | | 0.56 (0.43) | | 0.56 (0.43) | |

TURNING RADIUS

| Model | | 2TS - 7T | 3TS-8W | 3TS-8T |
|----------------------|-----------|-----------|-------------|-------------|
| Bucket corner radius | ft-in (m) | 7-4 (2.2) | 7-6 (2.3) | 7-6 (2.3) |
| Quick hitch radius | ft-in (m) | 4-3 (1.3) | 4-11 (1.5) | 5-7 (1.7) |
| Rear chassis radius | ft-in (m) | 5-4 (1.6) | 5-11 (1.76) | 5-11 (1.76) |

SAE OPERATING WEIGHT

| Model | | 2TS - 7T | 3TS - 8W | 3TS - 8T |
|---------|---------|---------------|---------------|----------------|
| Cab* | lb (kg) | 9,914 (4,497) | 9,859 (4,472) | 12,615 (5,722) |
| Canopy* | lb (kg) | 9,782 (4,437) | 9,726 (4,412) | 12,482 (5,662) |

*Fully operational with quick hitch, standard shovel, full fuel tank, closed cab + 165 lb (75 kg) operator.

3TS-8W based on a machine equipped with 12x16.5 tires & 78" wide shovel

3TS-8T Solid Deal 450 mm wide tracks & 78" wide shovel

2TS-7T 320 mm wide tracks & 72" wide shovel

ENGINE

| Model | | 2TS - 7T | 3TS - 8W | 3TS - 8T |
|--|------------------------------------|-----------------------|-----------------------|----------|
| Engine model | | KDI 2504 TCR | EcoMAX TC4E-55 | |
| Displacement | in ³ (cm ³) | 2,482 | 268 (4,399) | |
| Fuel | | Diesel | Diesel | |
| Cooling | | Water | Water | |
| Aspiration | | Turbo | Turbo | |
| Gross power SAE J1995 | hp (kW) | 74 (55) (@ 2,600 RPM) | 74 (55) (@ 2,400 RPM) | |
| Gross torque @ 1,200 RPM | lb/ft (Nm) | 195 (265) | 295 (400) | |
| Emission certification | | EPA-T4F (EU St3B) | EPA-T4F (EU St3B) | |
| Engine oil service interval hours | | 500 | 500 | |
| Variable speed, hydraulically-driven fan | | YES | YES | |

SERVICE CAPACITIES

| Model | | 2TS - 7T | 3TS - 8W | 3TS - 8T |
|--------------------------------------|---------|------------|------------|----------|
| Hydraulic system (including tank) | gal (l) | 12.6 (48) | 14.5 (55) | |
| Fuel tank | gal (l) | 25.9 (98) | 27.2 (103) | |
| Engine coolant | gal (l) | 2.7 (10.3) | 5.8 (22) | |
| Engine oil | gal (l) | 3.0 (11.5) | 3.7 (14) | |
| LH chaincase (wheeled machines only) | gal (l) | 5.0 (19.1) | 3.1 (11.7) | |
| RH chaincase (wheeled machines only) | gal (l) | 5.0 (19.1) | 3.1 (11.7) | |

HYDRAULIC PERFORMANCE

| Model | | 2TS - 7T | 3TS - 8W | 3TS - 8T |
|------------------------|---------|---------------|---------------|----------------|
| R.O.C retracted | lb (kg) | 2,096 (951) | 3,208 (1,455) | 3,695 (1,676) |
| R.O.C extended | lb (kg) | 1,140 (517) | 1,347 (611) | 1,614 (732) |
| Tipping load retracted | lb (kg) | 6,138 (2,784) | 6,418 (2,911) | 10,558 (4,789) |
| Tipping load extended | lb (kg) | 3,403 (1,544) | 2,694 (1,222) | 4,612 (2,092) |
| Loader lift retracted | lb (kg) | 4,127 (1,872) | 5,260 (2,386) | 5,187 (2,353) |
| Loader lift extended | lb (kg) | 2,476 (1,123) | 3,527 (1,600) | 3,708 (1,682) |
| Bucket tilt retracted | lb (kg) | 6,503 (2,950) | 6,473 (2,936) | 6,473 (2,936) |
| Bucket tilt extended | lb (kg) | 6,582 (2,985) | 6,695 (3,037) | 6,695 (3,037) |

HYDRAULICS

| Model | | 2TS - 7T | 3TS - 8W | 3TS - 8T |
|----------------------|-------------|-------------------------|---------------------|----------|
| Pump Flow | gpm (l/min) | 18.6 (70 l) @ 2,740 RPM | 24 (90) @ 2,300 RPM | |
| Main relief pressure | psi (bar) | 3,335 (230) | 3,335 (230) | |
| HYD HP low flow | hp (kW) | 25.1 (18.7) | 46.7 (34.8) | |
| HYD HP high flow | hp (kW) | 33.2 (24.7) | 64.2 (47.8) | |
| Optional high flow | gpm (l/min) | 29.4 (110) | 33 (125) | |

ELECTRICS

| Model | | 2TS - 7T | 3TS - 8W | 3TS - 8T |
|---------------|---------|----------|------------|----------|
| Starter motor | hp (kW) | 2.72 (2) | 5.63 (4.2) | |
| Battery | V/Ah | 12 / 109 | 12 / 109 | |
| Alternator | amps | 100 | 95 | |

TRANSMISSION

| Model | | 2TS - 7T | 3TS - 8W | 3TS - 8T |
|--------------|------------|------------|------------|------------|
| Single speed | mph (km/h) | 4.5 (7.2) | 6.8 (10.9) | 5.7 (9.2) |
| Two speed | mph (km/h) | 6.4 (10.3) | 12.4 (20) | 7.8 (12.6) |

STANDARD EQUIPMENT

| | |
|---|---|
| Sealed cab with heater/defroster | • |
| Powered electric quick hitch | • |
| Electronic hand throttle | • |
| Four (4) front and two (2) rear work lights - LED | • |
| Emergency lower valve | • |
| Fuel gauge | • |
| Hydraulic park brake | • |
| High flow auxiliary hydraulics | • |
| Rear service access door | • |
| Tilting cab for service access | • |
| Vinyl air suspension seat | • |
| Boom Float | • |
| Centrifugal dry engine air filter with primary and secondary elements | • |
| Battery Isolator | • |
| Foot throttle | • |
| Twine cutter (wheeled units only) | • |
| In-cab ISO/H pattern changeover | • |
| Fuel cap protection | • |
| Creep speed | • |
| Reversing fan | • |
| LiveLink telematics | • |
| 2-Speed | • |
| Smooth Ride | • |
| Parallel lift | • |

LIGHTING AND ELECTRICS

| | |
|--|---|
| 12 VDC Negative ground system | • |
| 1,000 cold cranking amps (CCA) battery @0deg F | • |
| Low charge pressure alarm | • |
| Engine water temperature alarm | • |
| Blocked air filter pressure alarm | • |
| Engine oil pressure alarm | • |
| Avoltage alarm | • |
| Operator enclosure mounted fuse and relay box | • |
| Reverse back up alarm | • |
| Low Fuel Alarm | • |

OPERATOR ENVIRONMENT

| | |
|--|---|
| Full ROPS and Level I FOPS | • |
| 7" display / touch screen | • |
| Full visual and audible warning system | • |
| Operator Enclosure access through side door | • |
| Fully adjustable seat | • |
| Retractable 2 in. seat belt | • |
| Electric over hydraulic controls with JCB multi-function joysticks | • |
| Pod storage area | • |
| Cup holder | • |
| Power socket | • |
| Rear view mirror | • |
| Interior light | • |
| Review camera | • |

OPTIONAL FEATURES

| | |
|--|---|
| CANOPY - INCLUDES ALL STANDARD FEATURES | + |
| Fender (3TS-8W only) | • |
| CAB - INCLUDES ALL STANDARD FEATURES PLUS | + |
| Block Heater - 110v | • |
| Radio | • |

TIRES/TRACKS

| | |
|--|---|
| 2TS-7T MODEL | |
| 12.5 in. (320 mm) Wide Rubber Track | • |
| 3TS-8W MODEL | |
| 12 x 16.5 10PR HD Wide Track Tires (71.1 in. (1820 mm) width over tires) | + |
| 12.5 x 16.5 10 PLY Wide Track Lifemaster Industrial Pneumatic Tires | + |
| 3TS-8T MODEL | |
| 17.7 in. (450 mm) Wide Rubber Track | • |

STANDARD •
OPTIONAL +





ONE COMPANY, MORE THAN 300 MACHINES.

Your nearest JCB Dealer

TELESKID | 2TS-7T | 3TS-8W | 3TS-8T

Operating weight: 9,914 - 12,615 lb (4,497 - 5,722 kg) Gross Rated Power: 74 hp (55kW)

JCB North America

2000 Bamford Blvd., Pooler, Georgia, 31322 Tel: (912) 447-2000

Download the very latest information on this product range at www.jcb.com

JCB Inc. All rights reserved. No part of this publication may be reproduced, stored in a retrieval system, or transmitted in any form or by any other means, electronic, mechanical, photocopying or otherwise, without prior permission from JCB Inc. All references in this publication to operating weights, sizes, capacities and other performance measurements are provided for guidance only and may vary dependant upon the exact specification of machine. They should not therefore be relied upon in relation to suitability for a particular application. Guidance and advice should always be sought from your JCB Dealer. JCB reserves the right to change specifications without notice. Illustrations and specifications shown may include optional equipment and accessories. The JCB logo is a registered trademark of J.C. Bamford Excavators Ltd.

